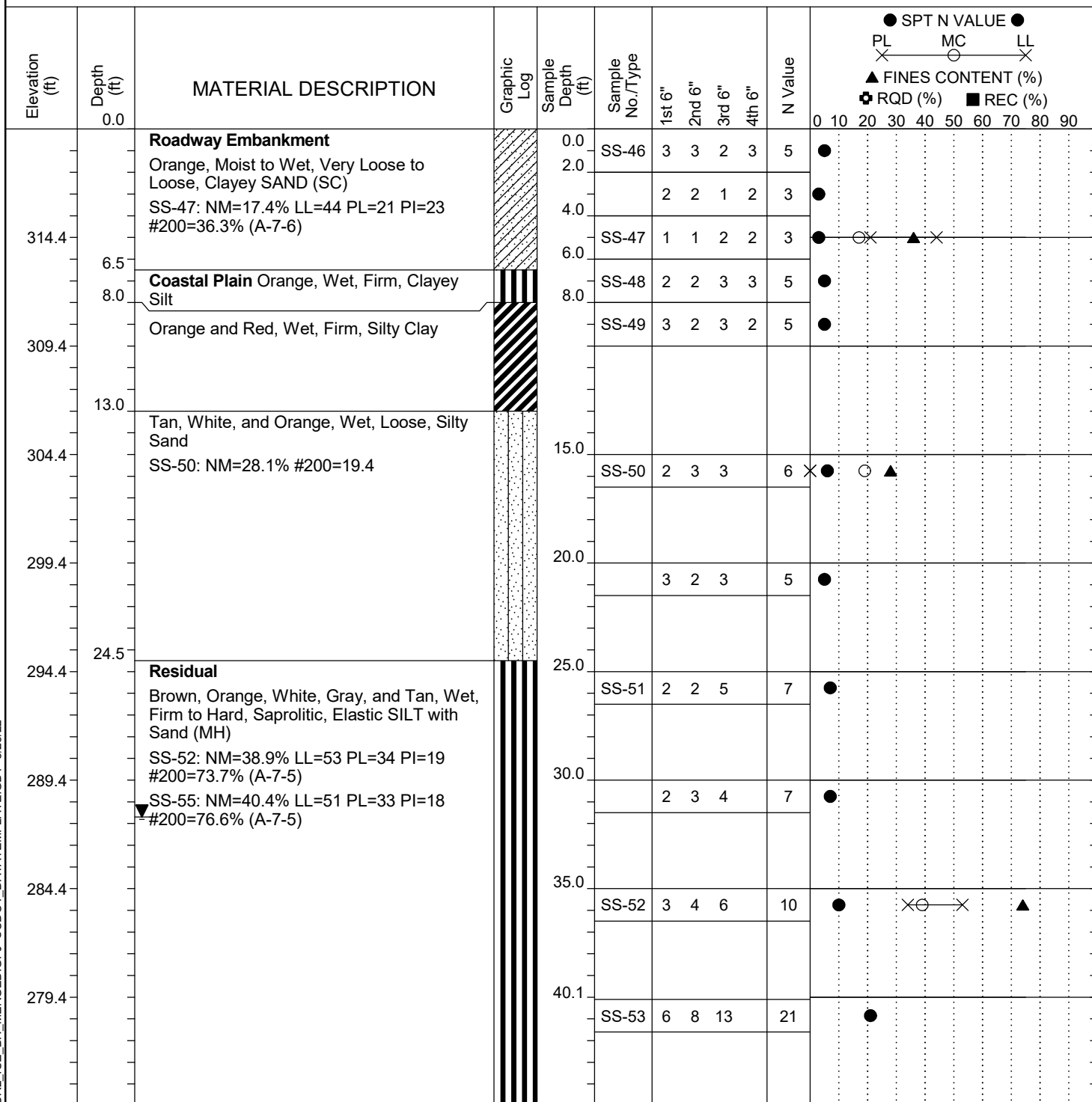


Project ID:	P039719	County:	Richland	Boring No.:	G-126
Site Description:	Carolina Crossroads Phase 2			Route:	Broad River Rd.
Eng./Geo.:	C. McIlroy	Boring Location:	615+79	Offset:	53 LT
Elev.:	319.4 ft	Latitude:	34.03931253	Longitude:	-81.09321267
Total Depth:	95.1 ft	Soil Depth:	95.1 ft	Date Started:	3/2/2022
Core Depth:	N/A ft	Date Completed:	3/3/2022	Alignment:	US176WB
Bore Hole Diameter (in):	2.25	Sampler Configuration		Liner Required:	Y (N)
Drill Machine:	D-50 #435	Drill Method:	Casing w/ Adv	Hammer Type:	Automatic
Core Size:	N/A	Driller:	M. Morgan	Energy Ratio:	84.4%
		Groundwater:	TOB	24HR	31.7 ft



LEGEND

Continued Next Page

SAMPLER TYPE		DRILLING METHOD	
SS - Split Spoon	NQ - Rock Core, 1-7/8"	HSA - Hollow Stem Auger	RW - Rotary Wash
UD - Undisturbed Sample	CU - Cuttings	CFA - Continuous Flight Augers	RC - Rock Core
AWG - Rock Core, 1-1/8"	CT - Continuous Tube	DC - Driving Casing	